



**7.1.1 Measures initiated by the Institution for the promotion of gender equity during the year.**

**Provide Web link to:**

**1. Institution shows gender sensitivity in providing facilities such as:**

1. Safety and Security
2. Counselling
3. Common Room

**Response:**

**Safety and Security:**

1. The institute's campus is fully covered by CCTV surveillance.
2. A security guard is present at the institute's entrance around-the-clock.
3. During business hours, attendants are available on each floor to monitor any suspicious activities.
4. The "Yuvati Sabha" sponsors a number of health and mental health initiatives to provide female students the physical stamina and emotional poise they need to deal with challenging circumstances.
5. Through numerous guest lectures, workshops, etc., the girls are also taught about their legal rights and how to use social media responsibly.
6. The Institute has made sure that high-quality sanitary napkins are readily available through sanitary napkin vending machines and that soiled napkins are disposed of through Sanitary Napkin Incinerators for promoting Menstrual Health of girls.

**Counselling:**

1. The institute places a great deal of focus on student counseling. Dr. Niraj Deo has been appointed by KCE Society as the institute's professional counselor.
2. All female faculty members believe that it is their moral duty to assist and advise female students as necessary.
3. An MOU exists between the institute and the Bhagirathi Counseling Center. The counseling center and the institute have run life skills training programs and intend to



work together to administer a number of psychometric and psychological tests to the students, which will be followed by counseling.

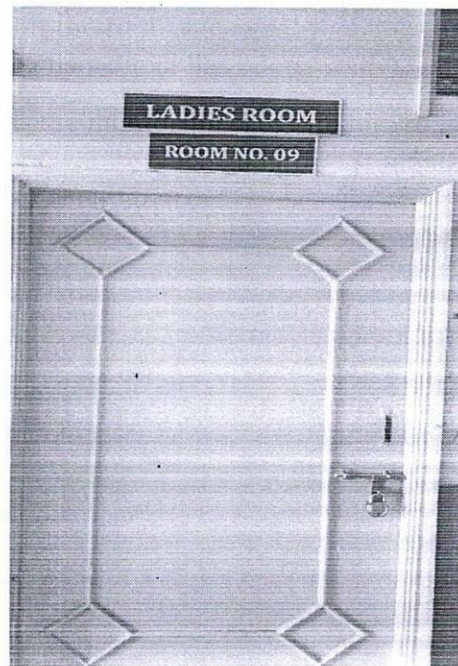
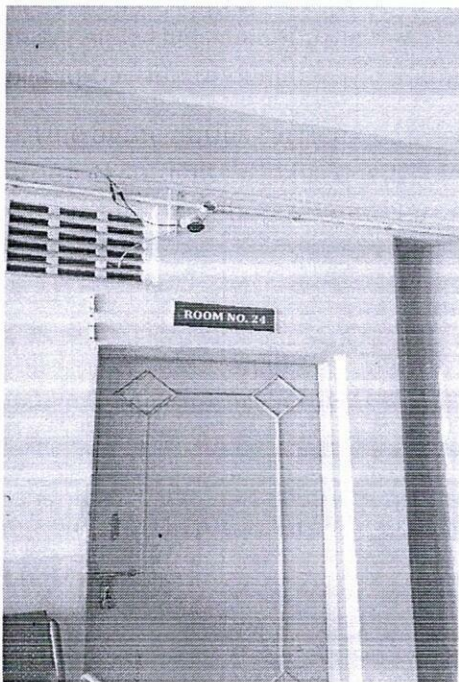
4. In addition, a woman's anti-harassment committee and an anti-ragging cell are in operation to address the complaints of faculty members and female students. These cells make sure that such an incident never occurs in the first place, and if it does, they take prompt action to penalize the violators after the misconduct has been established.

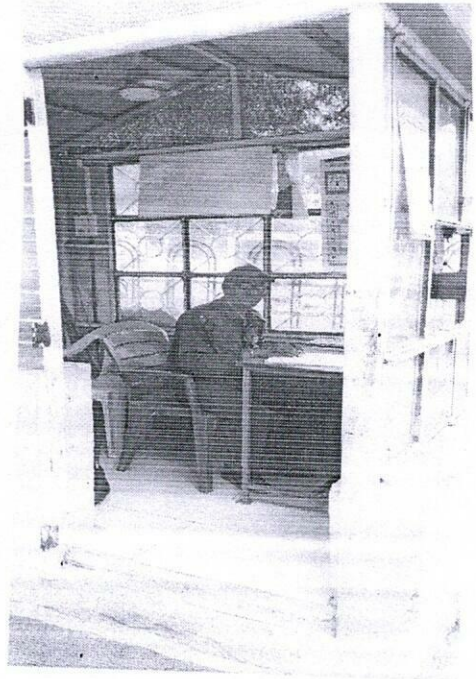
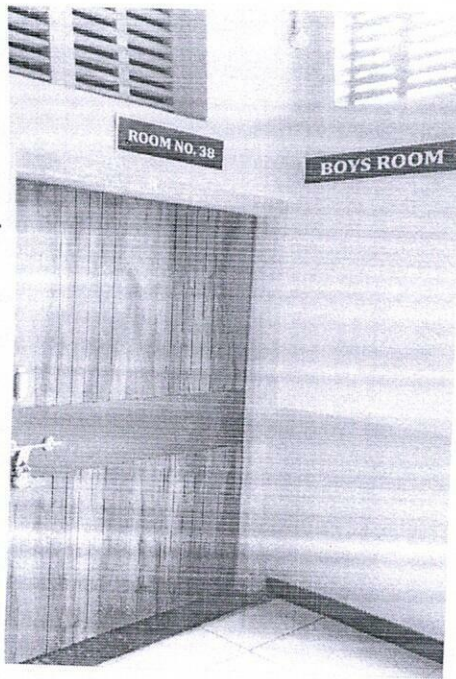
5. One of the duties carried out by the institute is the mentoring program for students. The group of students is paired with faculty members who serve as mentors. Students consult with faculty members about their issues and seek their advice.

**Common room:**

The girls have access to the common room. The room serves as a place for socializing and relaxation. Additionally, the area contains amenities including a washroom and a vending machine for sanitary napkins.

Safety, Security Measures & Common room:





*[Handwritten signature]*